

New Student Survey
Fall 2003



Contents

Executive Summary	1
Table 1 - Survey Response Rate	2
Table 2 - Most Important College Goals by Student Type.....	3
Figure 1 - New Student College Goals by Priority Grouping:.....	4
Table 3 - Admissions Selection Choice of UNCA	5
Table 4 - Number of Colleges Applied to Counting UNCA.....	5
Table 5 - Which Colleges, Other Than UNCA Did You Apply?.....	6
Table 6 - New Student Degree Intentions by Student Type.....	7
Table 7 - New Student Degree Intentions by Race.....	7
Table 8 - Admissions Scores of New Freshmen by Degree Intention.....	8
Figure 2 - New Freshmen Predicted GPA by Degree Intention.....	9
Table 9 - New Freshmen Retention Rates by Degree Intention, Cohort Year, & Follow-up Year.....	10
Table 10 - Freshmen Graduation Rate by Degree Intention	10
Table 11 - Schools to Which New Students Intend to Transfer.....	11
Table 12 - Reasons for Enrolling at UNCA by Level of Importance.....	12
Table 13 - Reasons for Freshmen Enrolling at UNCA	13
Figure 3 - Retention Rate of Students Returning for the Second Year by Hours of Employment.....	14
Table 14 - Employment by Student Type.....	15
Table 15 - New Student Employment, First Year Cum GPA, and Retention to 2nd Year.....	16
Table 16 - Area in Which Students Lived During High School.....	17
Figure 4 - Highest Parental Level of Education for New Undergraduates	18
Table 17 - Parent's with a Baccalaureate Degree or Higher.....	19
Figure 5 - Family Income of New Fall Undergraduates	20
Table 18 - Family Income by Student Type.....	21
Table 19 - Level of Concern about Ability to Finance Education at UNCA	22
Table 20 - Computer Ownership.....	23
Table 21 - Internet Connectivity.....	23

Appendix: Survey Instrument

***Executive Summary
New Student Survey
Fall 2003***

In an effort to better understand the characteristics of our incoming students, the New Student Survey is administered to all new degree-seeking students each fall semester. These data help to describe the college goals, degree-intentions, socio-economic status, and employment activity of entering students. Freshmen data from selected questions are used in a system-wide survey project that encompasses all the 16 campuses in the UNC system. Since 1992, we have collected usable survey responses from 89% of freshmen and 75% of transfer students.

Seventy-three percent of Fall 2003 freshmen indicated UNCA was their first college choice. Six percent indicated UNCA was less than their second choice. When asked to which schools other than UNCA they applied, freshmen most frequently named Appalachian State, UNC Chapel Hill, North Carolina State University, UNC Wilmington, UNC Greensboro and UNC Charlotte.

The following factors are consistently reported by students as important reasons for enrolling at UNCA: (1) location; (2) small school environment; (3) academic reputation; (4) choice of major; (5) liberal arts emphasis; and (6) cost.

The most frequently cited college goals of freshmen are as follows:

	2000	2001	2002	2003
Prepare For Career or Good Job	90.3	81.6	82.5	83.8
Take Part in College Social Life	42.0	37.2	40.1	39.5
Acquire Broad Cultural/Literary Educ	30.7	31.4	33.2	33.9
Dev Ability to Think Critically	27.0	27.9	28.4	33.0
Gain Experience in Relating to People	33.5	33.8	33.2	29.1

The percentage of new freshmen indicating a clear intention to graduate from UNCA increased from 45% in 2002 to 47% in 2003. Seventy-nine percent of 2003 transfers enrolled with the intention of graduating from UNCA. Approximately 45% of freshmen are "undecided" about either earning a degree or plans to transfer and 7% intend to transfer and receive a degree elsewhere.

Fall 2003 freshmen reporting an intention to transfer from UNCA most often indicate a desire to enroll at NCSU (34%) or UNC Chapel Hill (32%). Historically, 61% of freshmen reporting an intention to graduate from UNCA receive a degree within five years. Among those intending to transfer, 28% change their plans and graduate from UNCA.

Forty percent of new 2003 freshmen had plans for a mean of 15 hours of employment per week. The rate of employment is greater for transfer students (72%) who plan to work a mean of 22 hours per week. Nine percent of new freshmen and 43% of new transfer students planned to work 20 or more hours per week.

Among new freshmen, 71% have a least one parent with a four-year college degree. The median family income of new 2003 freshmen is \$60,001 - \$75,000.

Eighty-eight percent of new freshmen reported that they have a computer for personal use. Of those, 87% said they have Internet access. Eighty-two percent of new transfers have a computer, 75% of whom have Internet access.

Table 1
Survey Response Rate

Fall Semester	Student Type						All Students		
	New Freshmen			Transfer			Enrolled Students	Completed Survey	Response Rate
	Enrolled Students	Completed Survey	Response Rate	Enrolled Students	Completed Survey	Response Rate			
1992	365	358	97.5	328	294	89.6	693	652	93.8
1993	397	338	84.5	301	237	78.2	698	575	81.8
1994	398	388	97.5	358	295	82.4	756	683	90.3
1995	397	387	96.5	350	305	86.4	747	692	91.8
1996	456	412	89.9	253	191	74.9	709	603	84.6
1997	473	438	92.4	312	260	83.1	785	698	88.7
1998	480	408	85.0	326	229	70.2	806	637	79.0
1999	461	382	82.5	287	187	64.6	748	569	75.6
2000	502	433	85.9	302	175	57.8	804	608	75.3
2001	454	379	83.3	333	248	74.5	787	627	79.6
2002	428	381	88.8	384	297	77.3	812	678	83.4
2003	599	540	90.2	304	164	53.9	903	704	78.0
All Years	5,410	4,844	89.2	3,838	2,882	74.9	9,248	7,726	83.3

Table 2
Most Important College Goals by Student Type
(Data Expressed as Percentage of Students Selecting Up to Three Goals)

College Goal	New Freshmen					Transfer				
	1999	2000	2001	2002	2003	1999	2000	2001	2002	2003
Prepare For Career or Good Job	88.5	90.3	81.6	82.5	83.8	85.8	85.0	85.8	89.5	82.5
Take Part in College Social Life	36.6	42.0	37.2	40.1	39.5	15.8	17.3	19.1	17.3	10.0
Acquire Broad Cultural/Literary Educ	32.2	30.7	31.4	33.2	33.9	29.0	31.8	33.3	34.6	41.3
Dev Ability to Think Critically	26.4	27.0	27.9	28.4	33.0	46.4	48.6	43.5	34.2	45.0
Gain Experience in Relating to People	33.5	33.5	33.8	33.2	29.1	19.7	24.9	24.8	24.4	23.8
Dev Ability to Write/Speak Effectively	21.2	21.9	25.8	20.2	23.6	37.7	23.1	30.5	28.8	35.6
Dev Apprec, Enjoy of Art, Music, & Lit	25.1	19.6	23.1	27.6	21.4	15.8	20.8	23.6	23.7	20.6
Dev Understand of Science and Tech	17.0	15.7	20.2	17.8	18.4	20.8	23.7	19.1	18.0	16.9
Wanted to Get Away From Home	9.9	12.2	10.4	10.3	10.1	4.9	2.9	3.7	4.1	5.6
Nothing Better to do	1.6	1.8	1.9	1.9	1.7	1.6	1.2	0.4	1.4	1.3

Figure 1

New Student College Goals by Priority Grouping
Fall 2003 New Freshmen

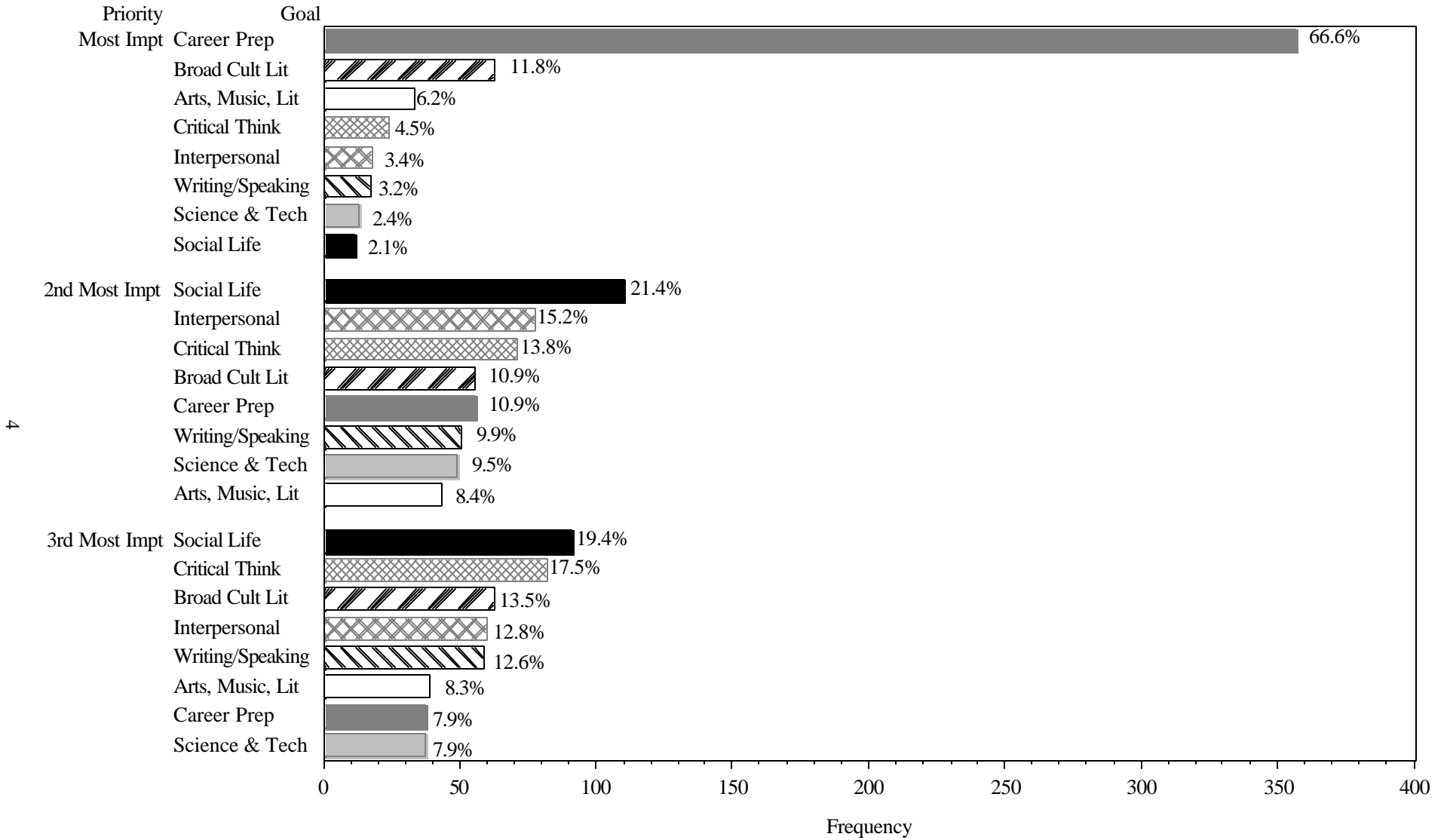


Table 3
Admissions Selection Choice of UNCA
(Percentages)

Is UNCA Your:	New Freshmen					Transfer				
	1999	2000	2001	2002	2003	1999	2000	2001	2002	2003
First Choice	76.7	82.0	74.3	75.3	73.4	93.5	91.3	91.8	90.1	91.8
Second Choice	18.8	14.3	19.6	19.9	21.0	5.9	6.9	6.9	7.8	7.6
Less Than Second Choice	4.5	3.7	6.1	4.8	5.6	0.5	1.7	1.2	2.0	0.6
Total	100.0	100.0	100.0	100.0	100.0	100.0	100.0	100.0	100.0	100.0

Table 4
Number of Colleges Applied to Counting UNCA: New Freshmen

Region	Number of Colleges									
	1999		2000		2001		2002		2003	
	N	Mean	N	Mean	N	Mean	N	Mean	N	Mean
Eastern	28	2.9	29	2.8	22	4.0	26	2.2	27	3.1
Piedmont	151	3.2	154	2.8	153	2.7	139	2.9	216	2.9
Western	149	2.3	167	2.5	144	2.5	148	2.3	185	2.4
Out-of-State	54	3.8	83	4.1	60	3.6	68	3.8	112	4.2
Total Respondents	382	2.9	433	2.9	379	2.8	381	2.8	540	3.0

Table 5
To which colleges other than UNCA did you apply?
Fall 2003 Freshmen

School	N	PERCENT
Appalachian State University	122	11.8
University of North Carolina at Chapel Hill	85	8.3
North Carolina State University	71	6.9
University of North Carolina at Wilmington	46	4.5
University of North Carolina at Greensboro	45	4.4
University of North Carolina at Charlotte	44	4.3
Western Carolina University	36	3.5
Elon College	31	3.0
East Carolina University	22	2.1
Mars Hill College	15	1.5
College of Charleston	10	1.0
Furman University	10	1.0
Wake Forest University	10	1.0
Brevard College	8	0.8
Gardner-Webb University	8	0.8
Guilford College	8	0.8
Ithaca College	8	0.8
Warren Wilson College	8	0.8
Lenoir-Rhyne College	7	0.7
University of South Carolina - Columbia	7	0.7
University of Vermont	7	0.7
Virginia Polytechnic Institute and State Univ	7	0.7
Campbell University	6	0.6
Davidson College	6	0.6
Montreat College	6	0.6
Wingate University	6	0.6
Bennington College	5	0.5
College of William and Mary	5	0.5
East Tennessee State University	5	0.5
Florida State University	5	0.5
Lynchburg College	5	0.5
Oberlin College	5	0.5
University of Florida	5	0.5
University of Georgia	5	0.5
University of Maryland College Park	5	0.5
University of Pittsburgh, Pittsburgh Campus	5	0.5
Belmont Abbey College	4	0.4
Duke University	4	0.4
George Washington University	4	0.4
New York University	4	0.4
University of Delaware	4	0.4
Other (Schools With N <= 3 Combined)	321	31.2
Total	1030	100.0

Table 6
New Student Degree Intentions by Student Type
(Percentages)

Degree Intentions	New Freshmen					Transfer				
	1999	2000	2001	2002	2003	1999	2000	2001	2002	2003
Earn Degree at UNCA	45.5	52.0	39.1	45.1	47.2	75.3	74.9	82.3	80.8	78.7
Earn Degree But Transfer	12.3	8.3	11.1	7.1	7.2	5.4	6.9	3.6	3.7	2.4
Undecided About Earning Degree	14.4	16.6	15.8	19.9	20.2	3.8	6.3	3.2	2.7	4.9
Undecided About Transferring	25.1	21.9	31.1	26.5	24.4	11.8	9.1	9.3	10.4	11.0
Will Not Earn Degree	2.4	0.9	2.4	1.3	0.9	3.2	2.3	1.6	1.0	1.2
No Response	0.3	0.2	0.5	0.0	0.0	0.5	0.6	0.0	1.3	1.8
Total	100.0	100.0	100.0	100.0	100.0	100.0	100.0	100.0	100.0	100.0

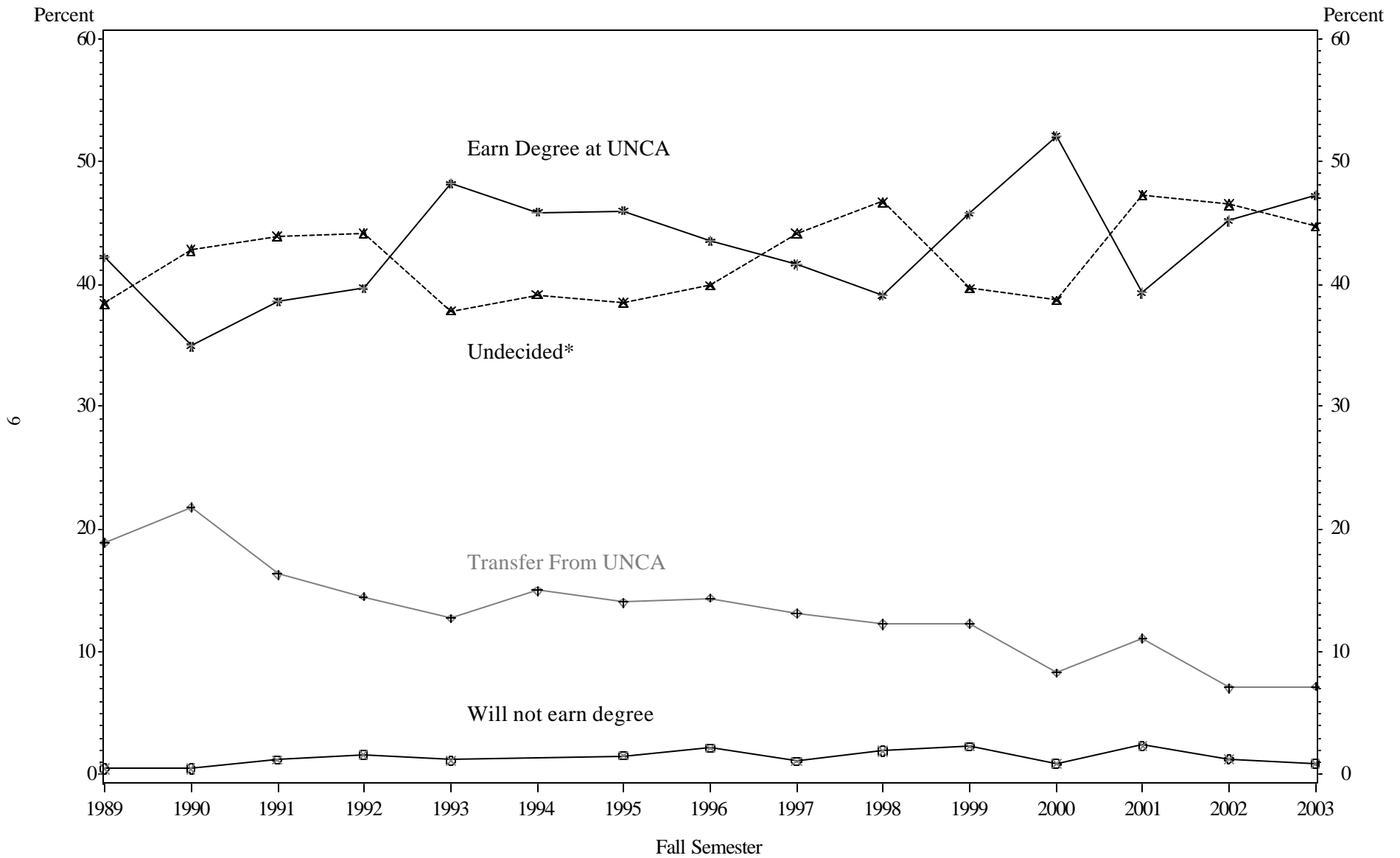
Table 7
New Student Degree Intentions by Race/Ethnicity
(Percentages)

Degree Intentions	Minority					White				
	1999	2000	2001	2002	2003	1999	2000	2001	2002	2003
Earn Degree at UNCA	50.0	50.0	55.1	52.9	60.0	55.6	59.0	56.5	61.5	53.9
Earn Degree But Transfer	17.5	13.6	10.2	7.8	6.2	9.5	7.5	7.9	5.5	6.2
Undecided About Earning Degree	10.0	9.1	8.2	9.8	9.2	11.0	14.1	11.2	12.6	17.5
Undecided About Transferring	17.5	27.3	22.4	23.5	21.5	21.3	17.6	22.2	18.9	21.3
Will Not Earn Degree	2.5	0.0	4.1	5.9	1.5	2.3	1.4	1.9	0.8	0.9
No Response	2.5	0.0	0.0	0.0	1.5	0.2	0.4	0.3	0.6	0.2
Total	100.0	100.0	100.0	100.0	100.0	100.0	100.0	100.0	100.0	100.0

Table 8
Admission Scores of New Freshmen by Degree Intention

Degree Intention	1999		2000		2001		2002		2003	
	SAT Mean	HS Rank Mean	SAT Mean	HS Rank Mean	SAT Mean	HS Rank Mean	SAT Mean	HS Rank Mean	SAT Mean	HS Rank Mean
Earn Degree at UNCA	1,166	80.7	1,180	81.7	1,176	82.6	1,170	79.7	1,174	79.1
Earn Degree But Transfer	1,136	79.0	1,156	78.6	1,138	77.9	1,161	78.3	1,143	76.2
Undecided About Earning Degree	1,127	77.5	1,122	74.3	1,153	77.9	1,153	75.9	1,161	74.7
Undecided About Transferring	1,133	76.7	1,137	77.4	1,164	80.1	1,174	76.9	1,166	73.3
Will Not Earn Degree	1,162	78.1	1,125	88.3	1,104	77.8	1,096	82.8	1,198	81.8
Cohort Total	1,148	79.0	1,158	79.4	1,162	80.4	1,166	78.2	1,167	76.6

Figure 2: New Freshmen Degree Intention by Year



*Undecided includes those undecided about earning a degree at UNCA or at all

Table 9
New Freshmen Retention Rates by Degree Intention, Cohort Year, & Follow-up Year

Follow-up Year		Cohort Year									All Years
		1994	1995	1996	1997	1998	1999	2000	2001	2002	Pct Return
		Pct Return	Pct Return	Pct Return	Pct Return	Pct Return	Pct Return	Pct Return	Pct Return	Pct Return	Pct Return
1	Earn Degree at UNCA	81.4	77.4	83.7	79.4	82.4	83.9	86.2	81.8	80.2	81.9
	Earn Degree But Transfer	70.7	64.8	72.9	64.9	70.0	76.6	69.4	69.0	74.1	70.0
	Undecided About Earning Degree	79.4	85.1	81.7	73.3	72.7	72.7	84.7	78.3	73.7	77.6
	Undecided About Transferring	76.9	74.3	77.7	81.0	77.4	74.0	70.5	75.4	76.2	76.1
	Year Total	78.2	75.7	80.3	76.9	77.7	78.8	81.1	77.7	77.4	78.2
2	Earn Degree at UNCA	72.9	69.5	71.3	64.4	75.5	79.3	75.1	79.1	-	73.3
	Earn Degree But Transfer	46.6	29.6	40.7	49.1	48.0	51.1	47.2	50.0	-	44.9
	Undecided About Earning Degree	58.8	61.7	63.3	65.3	53.0	56.4	62.5	73.3	-	62.0
	Undecided About Transferring	55.6	60.4	60.2	58.6	60.5	58.3	56.8	63.6	-	59.3
	Year Total	62.4	60.4	62.8	61.0	63.7	66.9	66.6	69.8	-	64.1
3	Earn Degree at UNCA	66.1	62.1	66.3	56.7	67.3	71.3	69.3	-	-	65.7
	Earn Degree But Transfer	36.2	29.6	35.6	45.6	46.0	44.7	41.7	-	-	39.6
	Undecided About Earning Degree	52.9	59.6	56.7	62.7	54.5	52.7	65.3	-	-	58.4
	Undecided About Transferring	53.0	57.4	53.4	59.5	60.5	60.4	49.5	-	-	56.4
	Year Total	56.5	55.9	57.0	57.0	60.4	62.4	61.9	-	-	58.7

Table 10
Freshmen Graduation Rate by Degree Intention: 1994-1998

Degree Intention	Freshmen Cohort					Total
	1994	1995	1996	1997	1998	
Earn Degree at UNCA	62.1	62.1	63.5	55.0	59.7	60.5
Earn Degree But Transfer	25.9	25.9	27.1	35.1	28.0	28.4
Undecided About Earning Degree	50.0	57.4	58.3	54.7	48.5	53.9
Undecided About Transferring	49.6	54.5	46.6	57.3	50.8	51.8
Cohort Total	51.8	54.4	53.0	52.9	51.1	52.6

Table 11
Schools to Which New Freshmen Intend to
Transfer
Fall 2003

Will Transfer To:	N	Percent
North Carolina State University	13	34.2
University of North Carolina at Chapel Hill	12	31.6
Western Carolina University	4	10.5
Appalachian State University	2	5.3
University of North Carolina at Charlotte	2	5.3
University of North Carolina at Wilmington	2	5.3
George Washington University	1	2.6
Lee University	1	2.6
Unknown Fice Code - North	1	2.6
Total	38	100

Table 12
Reasons for Enrolling at UNCA by Level of Importance
Fall 2003

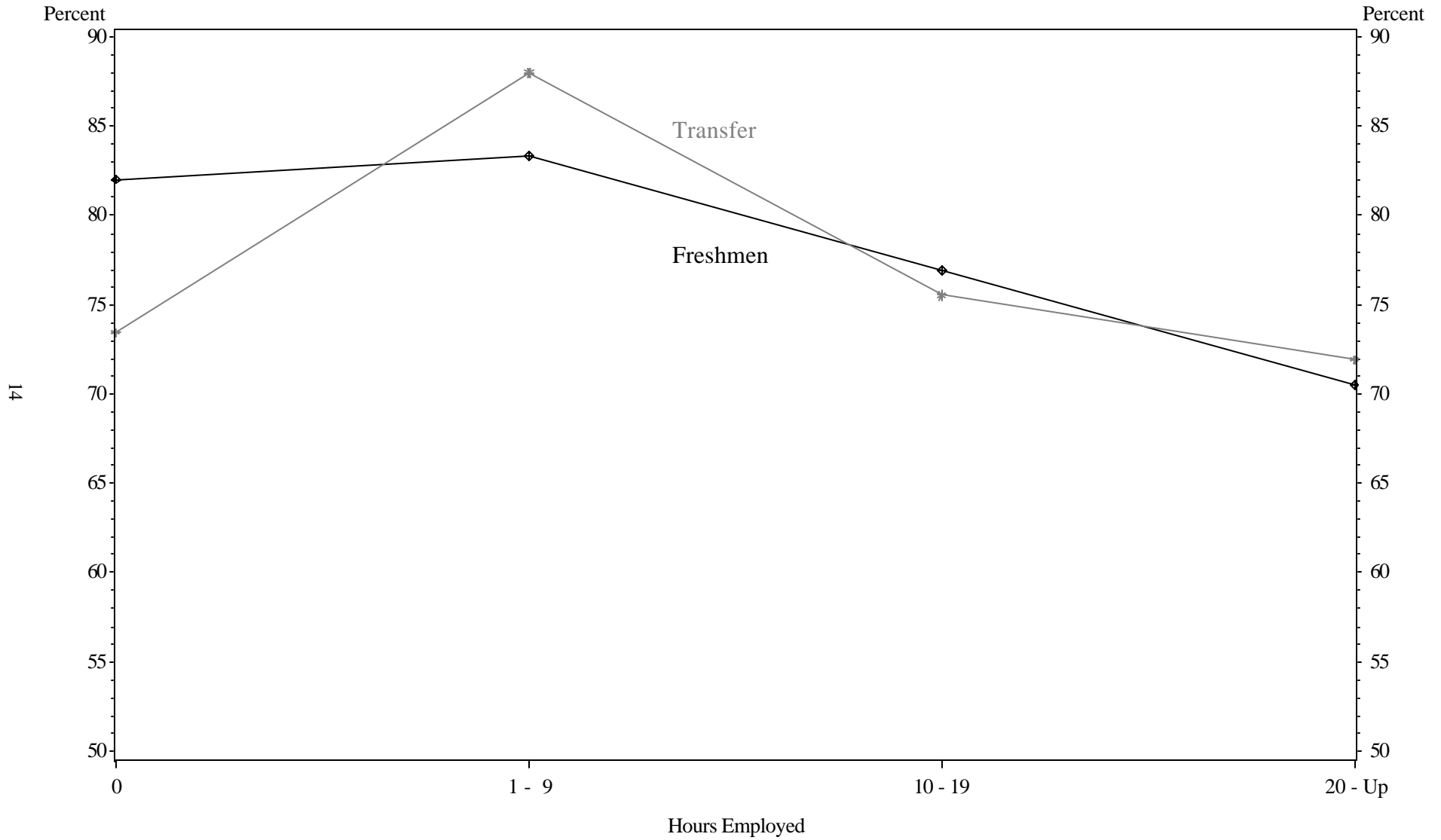
Reasons for Selecting UNCA	New Freshmen			Transfer		
	Not Important	Somewhat Important	Very Important	Not Important	Somewhat Important	Very Important
	Percent	Percent	Percent	Percent	Percent	Percent
Location of UNCA	7.3	28.0	64.7	4.3	18.0	77.6
UNCA's small school environment	9.1	32.5	58.4	15.5	34.8	49.7
UNCA has very good academic reputation	5.4	36.5	58.1	10.1	44.0	45.9
UNCA has major I'm interested in	16.7	36.0	47.3	12.1	22.9	65.0
Liberal arts emphasis	23.7	35.6	40.7	32.7	32.7	34.6
UNCA has low tuition and fees	19.4	40.4	40.2	13.2	36.2	50.7
Social climate/activities	18.5	53.6	27.9	41.3	41.3	17.4
I was offered financial assistance	54.7	22.5	22.8	54.6	19.7	25.7
Advice of parents or relatives	23.6	53.8	22.6	50.3	34.4	15.3
Someone who had been before advised me	49.6	30.4	20.0	55.7	27.5	16.8
UNCA's Undergrad Research Program	36.6	50.6	12.9	50.3	40.6	9.0
Advice of Teacher or Counselor	55.3	35.0	9.8	73.9	21.6	4.6

Table 13
Reasons for Freshmen Enrolling at UNCA
Percent Reporting Reason was "Somewhat Important" or "Very Important"

Reasons for Selecting UNCA	1993	1994	1995	1996	1997	1998	1999	2000	2001	2002	2003
UNCA has very good academic reputation	96.4	97.1	95.8	96.3	97.2	95.0	92.9	93.7	93.5	94.7	94.6
Location of UNCA	93.1	94.0	93.4	91.9	91.0	93.3	92.6	92.0	91.1	93.4	92.7
UNCA's small school environment	93.4	94.5	93.5	92.1	93.3	90.6	90.0	92.9	89.8	89.9	90.9
UNCA has major I'm interested in	84.6	89.0	80.6	83.0	82.5	82.4	86.6	86.6	81.7	82.5	83.3
Social climate/activities	81.9	80.1	79.8	77.0	80.3	79.6	80.2	83.9	81.3	81.4	81.5
UNCA has low tuition and fees	84.3	86.5	85.3	82.8	83.8	80.8	83.9	81.3	80.9	81.1	80.7
Advice of parents or relatives	72.1	77.2	69.9	77.2	71.1	73.6	76.2	73.8	77.7	78.4	76.5
Liberal arts emphasis	62.7	66.4	63.6	62.8	67.5	62.3	69.1	69.6	68.2	77.1	76.3
UNCA's Undergrad Research Program	61.9	67.5	63.2	60.1	58.2	60.0	61.0	61.0	60.6	62.2	63.5
Someone who had been before advised me	53.9	56.8	44.1	49.0	50.5	52.2	55.5	49.3	51.0	49.6	50.4
I was offered financial assistance	54.5	53.2	60.3	52.9	51.9	49.7	52.3	49.4	54.3	46.3	45.3
Advice of Teacher or Counselor	45.1	54.8	52.5	50.8	47.8	47.0	55.5	49.1	50.5	49.2	44.7

Figure 3: Retention Rate of Students for the Second Year
by Hours of Employment and Student Type

(1998-2002 Fall Cohorts Combined)



**Table 14
Employment by Student Type**

Cohort Year	New Freshmen					Transfer				
	N	Number Employed	Percent	Mean Hours	% 20 Hrs or More	N	Number Employed	Percent	Mean Hours	% 20 Hrs or More
1993	316	139	44.0	16.7	13.6	232	155	66.8	23.2	42.2
1994	369	198	53.7	15.5	14.1	283	190	67.1	23.6	41.3
1995	365	171	46.8	16.2	15.3	294	225	76.5	24.8	51.7
1996	400	160	40.0	15.8	11.5	187	130	69.5	24.2	52.9
1997	421	181	43.0	14.7	11.2	256	188	73.4	25.2	52.0
1998	403	172	42.7	15.8	13.9	226	158	69.9	22.7	44.2
1999	376	164	43.6	15.4	13.3	183	126	68.9	23.8	46.4
2000	424	178	42.0	15.9	11.6	175	114	65.1	24.1	44.0
2001	373	160	42.9	16.0	15.0	248	187	75.4	23.7	50.0
2002	374	151	40.4	17.0	13.4	297	216	72.7	23.0	48.5
2003	534	214	40.1	15.2	8.6	162	116	71.6	21.5	42.6
All Years	4,355	1888	43.4	15.8	12.7	2,543	1805	71.0	23.7	47.1

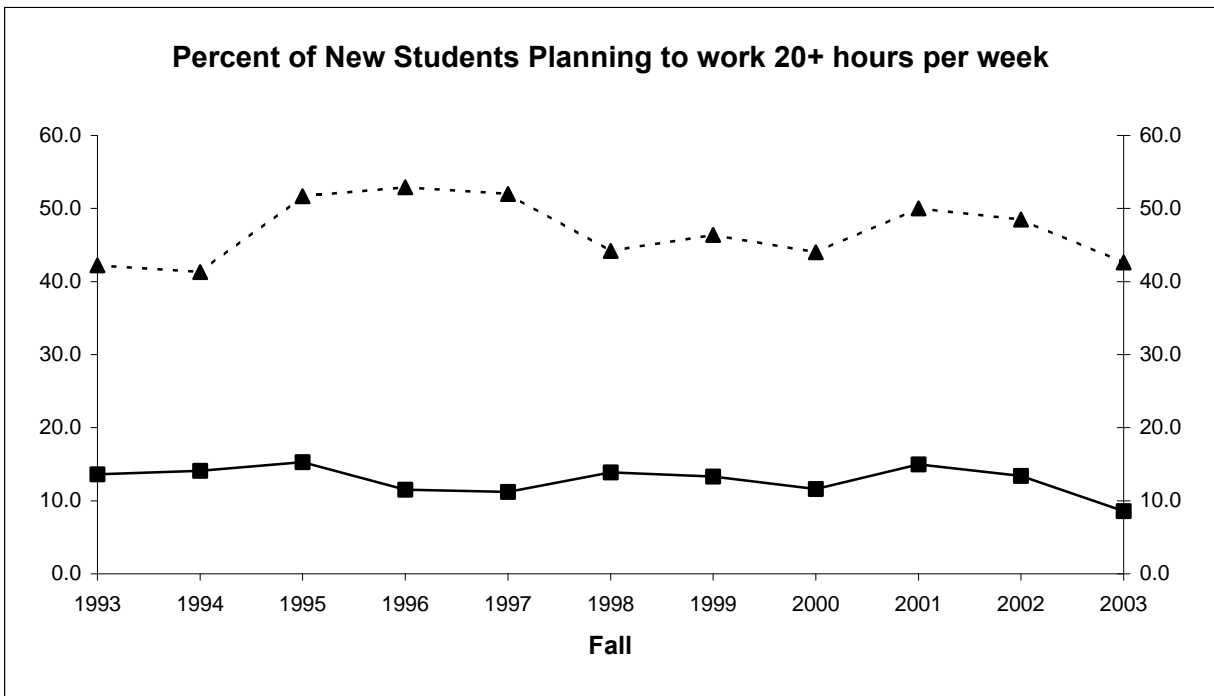


Table 15
New Student Employment, First Year Cum GPA, and Retention to 2nd Year
(New Fall Students)

Employment Status		Fall Cohort											
		1999			2000			2001			2002		
		N	Percent Enrolled	Cum GPA	N	Percent Enrolled	Cum GPA	N	Percent Enrolled	Cum GPA	N	Percent Enrolled	Cum GPA
Not Working	New Freshmen	212	83.5	2.8	246	82.1	2.8	213	80.8	3.0	223	83.4	3.0
	Transfer	57	78.9	2.9	61	70.5	3.0	61	83.6	3.0	81	64.2	2.7
	Status Total	269	82.5	2.8	307	79.8	2.8	274	81.4	3.0	304	78.3	2.9
1 - 9 Hours	New Freshmen	22	86.4	2.6	18	94.4	2.9	16	87.5	2.7	20	65.0	2.9
	Transfer	3	66.7	3.5	5	100.0	2.6	4	100.0	3.2	4	100.0	2.9
	Status Total	25	84.0	2.6	23	95.7	2.8	20	90.0	2.8	24	70.8	2.9
10 - 19 Hours	New Freshmen	74	70.3	2.7	85	85.9	2.9	75	72.0	2.7	56	76.8	2.5
	Transfer	36	83.3	3.0	33	69.7	3.0	53	79.2	3.1	60	71.7	2.8
	Status Total	110	74.5	2.8	118	81.4	2.9	128	75.0	2.9	116	74.1	2.7
20 or more Hours	New Freshmen	50	60.0	2.2	49	73.5	2.5	56	75.0	2.6	50	72.0	2.3
	Transfer	85	65.9	2.8	75	72.0	3.0	124	68.5	2.8	142	76.1	2.8
	Status Total	135	63.7	2.6	124	72.6	2.8	180	70.6	2.7	192	75.0	2.6
Cohort Total		539	76.3	2.8	572	79.2	2.8	602	77.1	2.9	636	76.3	2.8

Table 16
Area in Which Students Lived During High School
(Freshmen & Transfers Combined)

Size of Area	1998		1999		2000		2001		2002		2003	
	N	Pct	N	Pct	N	Pct	N	Pct	N	Pct	N	Pct
Rural Area	124	19.6	94	16.7	97	16.2	103	16.7	108	16.0	110	15.8
Small Town (less than 20,000)	160	25.3	162	28.8	167	27.8	174	28.2	197	29.2	179	25.7
Moderate Size City (20,001-60,000)	174	27.5	169	30.0	174	29.0	200	32.4	212	31.5	249	35.7
Large city (60,001-100,000)	87	13.8	72	12.8	76	12.7	70	11.3	75	11.1	87	12.5
Urban Area (more than 100,000)	87	13.8	66	11.7	86	14.3	71	11.5	82	12.2	72	10.3
Total	632	100.0	563	100.0	600	100.0	618	100.0	674	100.0	697	100.0

Figure 4: Highest Parental Level of Education for New 2003 Undergraduates

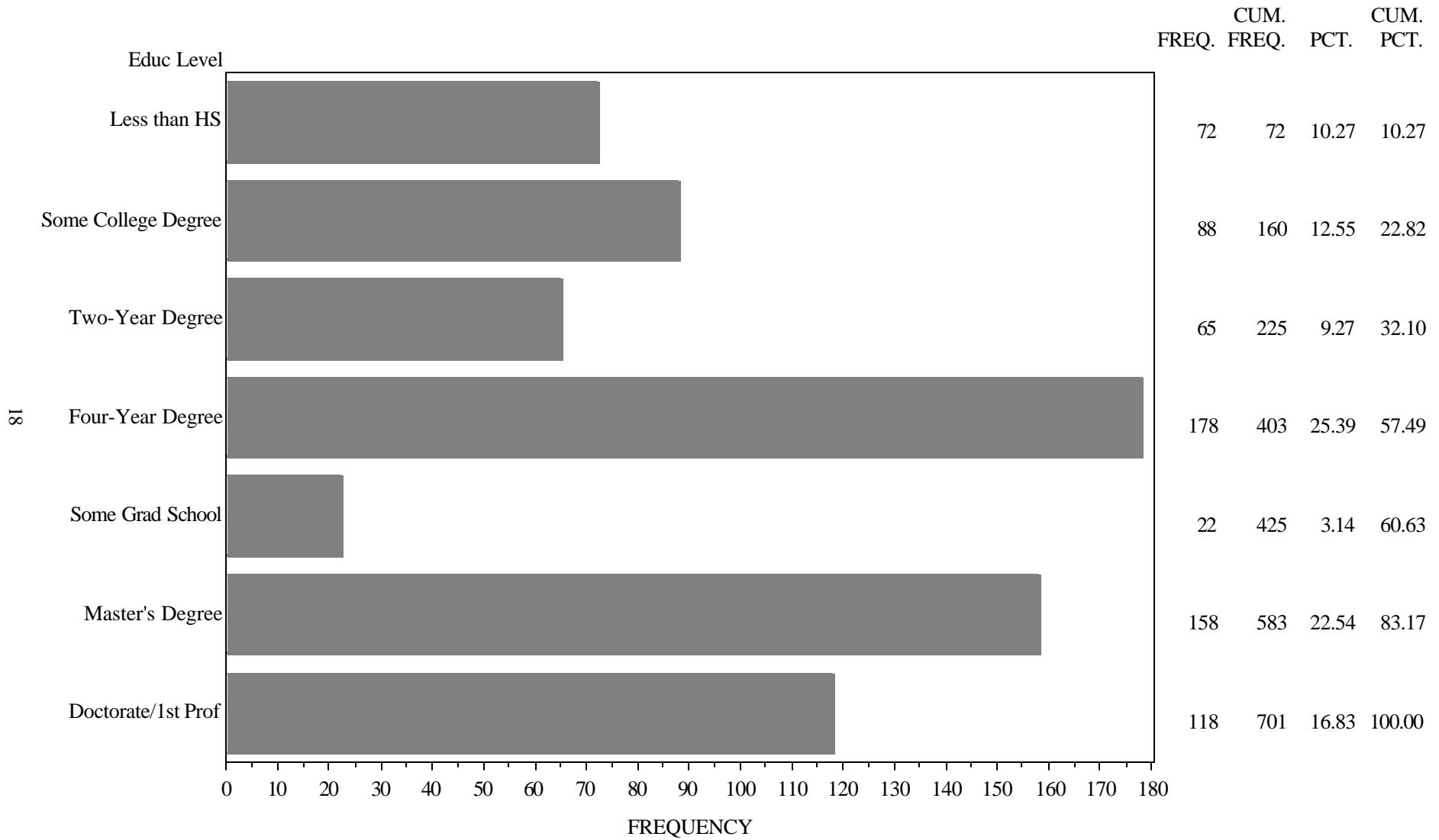


Table 17
Parent's With a Baccalaureate Degree or Higher

Student Type	N	Mother		Father		Either Parent		
		Have Degree	Percent	Have Degree	Percent	Have Degree	Percent	
New	1998	405	198	48.9	208	51.4	265	65.4
Freshmen	1999	381	190	49.9	198	52.0	247	64.8
	2000	429	215	50.1	245	57.1	288	67.1
	2001	374	188	50.3	216	57.8	256	68.4
	2002	378	192	50.8	224	59.3	265	70.1
	2003	538	307	57.1	324	60.2	384	71.4
Transfer	1998	229	80	34.9	95	41.5	115	50.2
	1999	185	77	41.6	90	48.6	110	59.5
	2000	173	77	44.5	83	48.0	101	58.4
	2001	246	84	34.1	115	46.7	130	52.8
	2002	295	116	39.3	140	47.5	169	57.3
	2003	163	71	43.6	75	46.0	92	56.4
Cohort Totals								
	1998	634	278	43.8	303	47.8	380	59.9
	1999	566	267	47.2	288	50.9	357	63.1
	2000	602	292	48.5	328	54.5	389	64.6
	2001	620	272	43.9	331	53.4	386	62.3
	2002	673	308	45.8	364	54.1	434	64.5
	2003	701	378	53.9	399	56.9	476	67.9

Figure 5: Family Income of New Fall 2003 Undergraduates

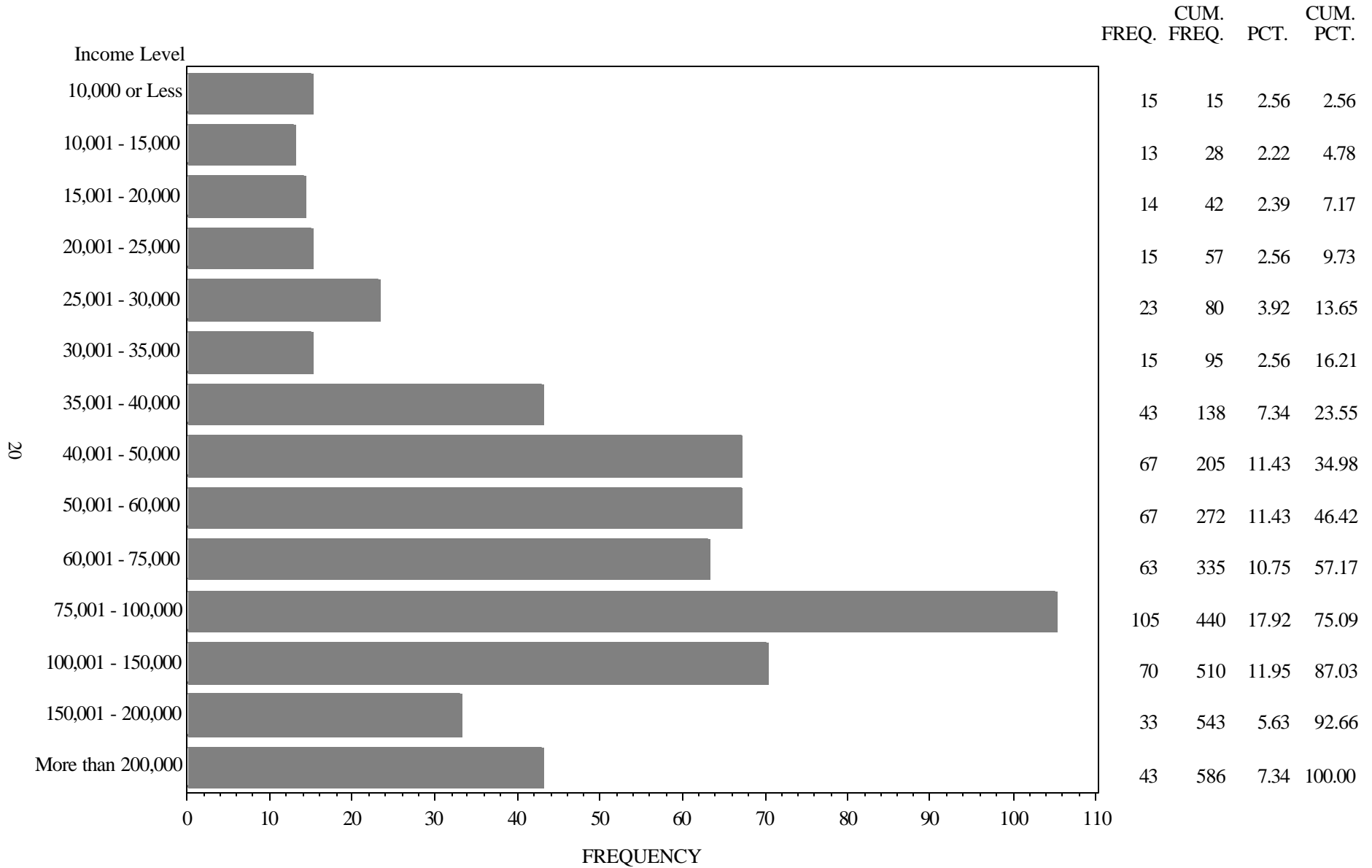


Table 18
Family Income by Student Type
(Percentages)

Family Income	New Freshmen						Transfer					
	1999	2000	2001	2002	2003	All Years	1999	2000	2001	2002	2003	All Years
10,000 or Less	2.5	2.2	1.6	1.9	1.8	2.0	3.2	3.4	2.8	2.9	5.2	3.4
10,001 - 15,000	2.2	1.9	2.2	0.9	1.3	1.7	1.9	0.7	0.9	2.9	5.2	2.2
15,001 - 20,000	3.4	1.6	3.4	1.2	2.7	2.5	5.8	4.8	3.7	2.5	1.5	3.6
20,001 - 25,000	4.0	3.0	4.1	2.2	2.7	3.1	1.3	6.1	5.1	4.6	2.2	4.0
25,001 - 30,000	4.9	4.6	4.1	5.6	3.5	4.5	9.1	4.1	6.5	5.8	5.2	6.2
30,001 - 35,000	3.4	3.5	4.4	4.0	2.7	3.5	8.4	5.4	7.4	5.8	2.2	6.1
35,001 - 40,000	10.2	5.4	5.3	7.2	6.6	6.9	6.5	8.8	9.3	8.8	9.7	8.6
40,001 - 50,000	10.8	14.7	10.0	10.3	10.4	11.3	8.4	9.5	13.9	11.3	14.9	11.7
50,001 - 60,000	9.0	12.5	9.7	10.0	11.3	10.6	10.4	13.6	12.0	12.1	11.9	12.0
60,001 - 75,000	13.0	13.6	12.8	19.9	11.9	14.1	12.3	13.6	13.9	11.3	6.7	11.8
75,001 - 100,000	16.0	20.4	19.1	16.5	18.6	18.2	16.9	17.0	11.1	12.9	15.7	14.3
100,001 - 150,000	13.0	9.5	15.9	11.8	13.5	12.7	5.2	8.8	5.6	10.8	6.7	7.6
150,001 - 200,000	3.7	3.3	4.1	4.4	6.2	4.4	5.8	0.7	4.2	3.3	3.7	3.6
More than 200,000	4.0	3.8	3.4	4.0	6.9	4.6	4.5	3.4	3.7	5.0	9.0	4.9
Total	100.0	100.0	100.0	100.0	100.0	100.0	100.0	100.0	100.0	100.0	100.0	100.0

Table 19
Level of Concern About Ability to Finance Education at UNCA

Student Type		Level of Concern						Total	
		No Concern		Some Concern		Major Concern			
		N	Percent	N	Percent	N	Percent	N	Percent
New Freshmen	1999	146	38.3	201	52.8	34	8.9	381	100.0
	2000	168	39.0	220	51.0	43	10.0	431	100.0
	2001	163	43.1	180	47.6	35	9.3	378	100.0
	2002	140	36.9	201	53.0	38	10.0	379	100.0
	2003	216	40.2	273	50.8	48	8.9	537	100.0
Transfer	1999	57	31.1	99	54.1	27	14.8	183	100.0
	2000	57	32.6	79	45.1	39	22.3	175	100.0
	2001	73	29.8	124	50.6	48	19.6	245	100.0
	2002	95	32.4	140	47.8	58	19.8	293	100.0
	2003	48	29.4	83	50.9	32	19.6	163	100.0
Cohort Totals									
	1999	203	36.0	300	53.2	61	10.8	564	100.0
	2000	225	37.1	299	49.3	82	13.5	606	100.0
	2001	236	37.9	304	48.8	83	13.3	623	100.0
	2002	235	35.0	341	50.7	96	14.3	672	100.0
	2003	264	37.7	356	50.9	80	11.4	700	100.0

Table 20
New Student Survey
Do you have a computer?

Student Type		Yes, total		Yes, a desktop		Yes, a laptop		No		Don't know yet	
		N	%	N	%	N	%	N	%	N	%
New Freshmen	2001	377	79.6	200	53.1	100	26.5	45	11.9	32	8.5
	2002	381	82.4	183	48.0	131	34.4	38	10.0	29	7.6
	2003	537	88.1	242	45.1	231	43.0	34	6.3	30	5.6
Transfer	2001	246	75.2	147	59.8	38	15.4	34	13.8	27	11.0
	2002	293	80.9	180	61.4	57	19.5	32	10.9	24	8.2
	2003	161	82.0	76	47.2	56	34.8	26	16.1	3	1.9
Cohort Total	2001	623	77.8	347	55.7	138	22.2	79	12.7	59	9.5
	2002	674	81.8	363	53.9	188	27.9	70	10.4	53	7.9
	2003	698	86.7	318	45.6	287	41.1	60	8.6	33	4.7

Table 21
New Student Survey

If you have computer, will it be connected to the Internet?

Student Type		Yes		No		Don't know yet	
		N	%	N	%	N	%
New Freshmen	2001	260	86.1	13	4.3	29	9.6
	2002	266	83.4	12	3.8	41	12.9
	2003	411	87.4	11	2.3	48	10.2
Transfer	2001	129	69.0	25	13.4	33	17.6
	2002	171	73.4	27	11.6	35	15
	2003	100	74.6	18	13.4	16	11.9
Cohort Total	2001	389	79.6	38	7.8	62	12.7
	2002	437	79.2	39	7.1	76	13.8
	2003	511	84.6	29	4.8	64	10.6